



MAC 25-4 SL
25 Tonne Lifting Capacity
Pick & Carry Crane
Datasheet
Metric

MAC 25-4 SL



Features: MAC 25-4

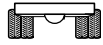
- ▶ 25 tonne at 1.41 m radius
- ▶ 2.3 tonne at 15.71 m radius
- ▶ 18 m maximum hook height
- ▶ Hook block (6 parts) capacity 25 tonne
- ▶ Single line 4.2 tonne

WORKS FOR YOU.™

LOAD CHART

MAC 25-4 SL

Fallblock, Rear Counterweight + Superlift Extra Counterweight, Third Boom Retracted



Pick & Carry 0.4m/s (1.44 km/h); On rubber 66.6%



6.1–14.0 m

AS 1418.5

m	Boom Length (m)													m		
	6.1	6.5	7.0	7.5	8.0	8.5	9.0	9.5	10.0	11.0	12.0	13.0	14.0			
1.4	25000	25000	25000	25000	24500	23950	23550								1.4	
	25000	25000	25000	25000	24550	24000	23600									
	49°	52°	56°	58°	61°	63°	65°									
2.0	23350	23300	23300	23300	23250	23250	23250	23250	23200						2.0	
	22550	22500	22500	22500	22450	22450	22450	22400	22400							
	41°	45°	49°	52°	55°	58°	60°	62°	64°							
2.5	21500	21500	21450	21450	21400	21400	21350	21350	21300	19100					2.5	
	20550	20500	20500	20450	20450	20400	20400	20350	20350	17750						
	19100	19050	19050	19000	19000	18950	18950	18900	17950	15900						
3.0	17650	17650	17650	17600	17600	17600	17550	17550	17500	17500	14550				3.0	
	16850	16850	16850	16800	16800	16750	16750	16750	16700	16350	13450					
	15650	15650	15650	15600	15600	15550	15550	15550	14900	13350	12100					
3.5	14950	14900	14900	14900	14850	14850	14850	14800	14800	14800	13450	12600			3.5	
	14250	14200	14200	14200	14200	14150	14150	14150	14100	14100	12450	11600				
	13200	13200	13200	13150	13150	13150	13100	13100	12750	11500	10500	9650				
4.0	(3.5)	19°	28°	35°	40°	44°	47°	50°	53°	57°	61°	63°			4.0	
	13300	12850	12850	12850	12800	12800	12800	12800	12750	12400	11600	11000				
	12700	12250	12250	12250	12200	12200	12200	12200	12150	12150	11650	10850	10200			
5.0	11750	11350	11350	11300	11300	11300	11300	11150	10050	9250	8550	10050			5.0	
	(3.9)	18°	27°	34°	39°	43°	46°	49°	54°	58°	61°	63°				
		11600	10250	9950	9950	9950	9950	9900	9900	9900	9900	9850	9600			
6.0		11050	9750	9450	9450	9450	9450	9450	9400	9400	9400	9000			6.0	
		10200	9000	8750	8750	8750	8750	8700	8100	7450	6900	6450				
		(4.4)	(4.9)	17°	26°	32°	37°	40°	46°	51°	55°	58°				
7.0				9150	8200	8000	8000	8000	8000	8000	8000	7950	7950			7.0
				8700	7800	7600	7600	7600	7600	7600	7600	7550	7550			
				8000	7200	7000	7000	7000	6850	6250	5800	5400				
8.0				(5.4)	(5.9)	16°	24°	30°	38°	44°	49°	53°			8.0	
						7450	6800	6650	6650	6650	6600	6600				
						7050	6450	6300	6300	6300	6250	6250				
9.0						6500	5900	5800	5800	5400	5000	4650			9.0	
						(6.4)	(6.9)	15°	29°	37°	42°	47°				
									6200	5600	5600	5600	5600			
10									5900	5300	5300	5300	5300			10
									5400	4850	4850	4400	4100			
									(7.4)	14°	27°	35°	41°			
11										5250	4800	4800	4800			11
										5000	4550	4550	4550			
										4550	4150	4000	3650			
12										(8.4)	14°	26°	34°			12
											4550	4150	4150			
											4300	3900	3900			

- RC (kg) at 0° articulation
- RC (kg) at 25° articulation
- RC (kg) at 40° articulation
- Boom angle
- Radius at 0° boom angle
- Loads above red line are structural

Notes to lifting capacity

Lifting capacities do not exceed 66.6% of tipping load. Weight of hook blocks and slings is part of the load, and is to be deducted from the capacity ratings. Consult Rated Capacity Manual for further details.

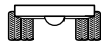
Data published herein is intended as a guide only and shall not be construed to warrant applicability for lifting purposes. Crane operation is subject to the computer charts and Rated Capacity Manual both supplied with the crane.



LOAD CHART

MAC 25-4 SL

Fallblock, Rear Counterweight + Superlift Extra Counterweight, Third Boom Extending



Pick & Carry 0.4m/s (1.44 km/h);
On rubber 66.6%



15.0–18.42 m

AS 1418.5

m	Boom Length (m)				m
	15.0	16.0	17.0	18.4	
kg	kg	kg	kg	kg	
1.4					1.4
2.0					2.0
2.5					2.5
3.0					3.0
3.5					3.5
4.0					4.0
5.0	9200 8600 6150 61°	8950 8200 5950 63°	8700 7950 5750 65°		5.0
6.0	8000 7550 5200 56°	7800 7300 5000 59°	7600 7100 4850 61°	6950 6400 4650 64°	6.0
7.0	6650 6300 4450 51°	6750 6400 4300 54°	6800 6400 4200 57°	6400 5950 4050 60°	7.0
8.0	5650 5350 3900 45°	5750 5450 3800 49°	5800 5500 3700 52°	5900 5550 3550 56°	8.0
9.0	4850 4600 3500 39°	4950 4650 3350 44°	5000 4750 3300 47°	5100 4800 3150 52°	9.0
10	4200 4000 3150 33°	4300 4050 3050 38°	4350 4150 2950 42°	4450 4200 2850 47°	10
11	3700 3500 2900 24°	3800 3550 2800 32°	3850 3650 2700 37°	3950 3700 2600 43°	11
12	3250 3050 2650 12°	3350 3150 2550 24°	3400 3200 2500 31°	3500 3300 2350 38°	12
13	3100 2900 2600 (12.4)	2950 2800 2400 12°	3050 2850 2300 23°	3100 2950 2200 32°	13
14		2850 2400 (13.4)	2700 2150 12°	2800 2050 25°	14
15			2600 2200 (14.4)	2500 1900 17°	15
15.71				2300 1900 (15.8)	15.71

- RC (kg) at 0° articulation
- RC (kg) at 25° articulation
- RC (kg) at 40° articulation
- Boom angle
- Radius at 0° boom angle
- Loads above red line are structural

Notes to lifting capacity

Lifting capacities do not exceed 66.6% of tipping load. Weight of hook blocks and slings is part of the load, and is to be deducted from the capacity ratings. Consult Rated Capacity Manual for further details.

Data published herein is intended as a guide only and shall not be construed to warrant applicability for lifting purposes. Crane operation is subject to the computer charts and Rated Capacity Manual both supplied with the crane.

MAC 25-4 SL

BRISBANE

585 Curtin Avenue East
Eagle Farm QLD 4009
AUSTRALIA

Ph: +61 7 3868 9600
Fax: +61 7 3268 2489

MELBOURNE

187 Osborne Avenue
Clayton South VIC 3169
AUSTRALIA

Ph: +61 3 9551 8644
Fax: +61 3 9551 8143

SYDNEY

114 Hassall Street
Wetherill Park NSW 2164
AUSTRALIA

Ph: +61 2 8786 4444
Fax: +61 2 8786 4455

PERTH

39 Catalano Road
Canning Vale WA 6155
AUSTRALIA

Ph: +61 8 9232 0000
Fax: +61 8 9232 0051

Effective Date: July 2014. Product specifications and prices are subject to change without notice or obligation. The photographs and/or drawings in this document are for illustrative purposes only. Refer to the appropriate Operator's Manual for instructions on the proper use of this equipment. Failure to follow the appropriate Operator's Manual when using our equipment or to otherwise act irresponsibly may result in serious injury or death. The only warranty applicable to our equipment is the standard written warranty applicable to the particular product and sale and Terex makes no other warranty, express or implied. Products and services listed may be trademarks, service marks or trade-names of Terex Corporation and/or its subsidiaries in the USA and other countries. All rights are reserved. Terex® is a registered trademark of Terex Corporation in the USA and many other countries. Copyright 2014 Terex Corporation.

Terex Cranes, Global Marketing, Dinglerstraße 24, 66482 Zweibrücken, Germany
Tel. +49 (0) 6332 830, Email: info.cranes@terex.com, www.terexcranes.com



www.terexcranes.com

Brochure Reference: TC-DS-M-E-MAC25-4SL-07/14



WORKS FOR YOU.™