



Link-Belt® LS-718 tower crane capacities — tower plus boom only

Refer to Notes page 5.

Tower — tubular; 100" (2.54 m) wide, 85" (2.16 m) deep, with retractable gantry, tower live mast, dual 1½" (28 mm) diameter tower pendants and dual 1½" (28 mm) diameter balance arm pendants.

Crawler — 17' 6" (5.33 m) extended gauge, 29' 11" (9.12 m) overall length.

Counterweight — 134,500# (61 009 kg) "AB" only.

Boom — tubular; 100" (2.54 m) wide, 85" (2.16 m) deep, with open throat top section, boom live mast dual 1½" (28 m) diameter pendants.

CAUTION: This material is for reference only. Operator must refer to in-cab capacity plate to determine allowable machine lifting capacities and operating procedures.

Length	Boom					Based on 30 m.p.h. (48.27 km/hr.) wind speed							
	Radius		Angle	160' (48.77 m) tower boom point height		Capacities with side frames extended — 360° swing							
	Feet	meters				Tower heights							
			140' (42.67 m) to 160' (48.77 m)	170' (51.82 m) to 190' (57.91 m)	200' (60.96 m) to 220' (67.06 m)	230' (70.10 m) to 250' (76.20 m)							
	Lbs.	kgs	Lbs.	kgs	Lbs.	kgs	Lbs.	kgs					
80' (24.38 m)	35	10.67	75.1	245' 2"	74.74	100.0*	45.4*	98.0*	44.5*	86.8*	39.4*	69.3*	31.4*
	40	12.19	71.4	243' 8"	74.28	97.5*	44.2*	97.0*	44.0*	84.9*	38.5*	68.4*	31.0*
	45	13.72	67.7	241' 8"	73.67	93.8*	42.5*	93.8*	42.5*	83.1*	37.7*	66.9*	30.3*
	50	15.24	63.9	239' 5"	72.97	91.7*	41.6*	91.7*	41.6*	81.3*	36.9*	65.5*	29.7*
	55	16.76	59.8	236' 7"	72.12	87.9*	39.9*	87.9*	39.9*	79.5*	36.1*	64.1*	29.1*
	60	18.29	55.8	233' 5"	71.14	87.4*	39.6*	87.4*	39.6*	77.2*	35.0*	62.7*	28.4*
	65	19.81	51.4	229' 6"	69.95	83.1	37.7	83.5	37.9	74.3*	33.7*	61.4*	27.9*
	70	21.34	46.9	224' 11"	68.55	75.8	34.4	76.1	34.5	72.2*	32.7*	59.8*	27.1*
	75	22.83	41.9	219' 7"	66.93	69.6	31.6	69.9	31.7	69.5*	31.5*	57.7*	26.2*
	80	24.38	36.4	212' 11"	64.89	64.7	29.3	65.0	29.5	65.2	29.6	56.2*	25.5*
90	27.43	21.6	192' 4"	58.61	56.0	25.4	56.3	25.5	56.5	25.6	52.9*	24.0*	
100' (30.48 m)	35	10.67	78.1	265' 10"	81.02	85.2*	38.6*	81.1*	36.8*	74.6*	33.8*	60.7*	27.5*
	40	12.19	75.2	264' 7"	80.65	84.2*	38.2*	80.0*	36.3*	72.7*	33.0*	58.5*	26.5*
	45	13.72	72.2	263' 1"	80.19	82.2*	37.3*	78.3*	35.5*	71.9*	32.6*	57.8*	26.2*
	50	15.24	69.3	261' 4"	79.64	80.6*	36.6*	76.6*	34.7*	70.9*	32.2*	57.1*	25.9*
	55	16.76	66.2	259' 2"	74.00	78.9*	35.8*	76.2*	34.6*	69.4*	31.5*	55.9*	25.4*
	60	18.29	63.1	256' 8"	78.24	77.2*	35.0*	75.5*	34.2*	67.9*	30.8*	55.2*	25.0*
	65	19.81	60.0	253' 11"	7.39	75.5*	34.2*	75.1*	34.1*	66.5*	30.2*	53.8*	24.4*
	70	21.34	56.7	250' 10"	76.44	74.9	34.0	74.4*	33.7*	64.8*	29.4*	52.7*	23.9*
	75	22.83	53.3	247' 1"	75.31	68.8	31.2	69.0	31.3	62.4*	28.3*	51.4*	23.3*
	80	24.38	49.7	243' 0"	74.07	63.9	29.0	64.2	29.1	60.1*	27.3*	50.0*	22.7*
90	27.43	41.9	232' 10"	70.96	55.3	25.1	55.5	25.2	55.7*	25.3	46.6*	21.1*	
100	30.48	32.5	218' 8"	66.66	48.5	22.0	48.7	22.1	48.8	22.1	42.7*	19.4*	
110	33.53	19.3	195' 2"	59.50	43.1	19.6	43.3	19.6	43.4	19.7	40.2*	18.2*	
110' (33.53 m)	35	10.67	79.1	276' 0"	84.12	79.3*	36.0*	74.9*	34.0*	68.2*	30.9*	55.0*	24.9*
	40	12.19	76.5	274' 10"	83.76	77.6*	35.2*	73.9*	33.5*	67.5*	30.6*	54.4*	24.7*
	45	13.72	73.9	273' 7"	83.39	75.9*	34.4*	72.0*	32.7*	66.6*	30.2*	53.8*	24.4*
	50	15.24	71.2	271' 11"	82.88	74.3*	33.7*	70.5*	32.0*	65.8*	29.8*	53.2*	24.1*
	55	16.76	68.5	270' 1"	82.33	73.3*	33.2*	69.8*	31.7*	64.9*	29.4*	52.1*	23.6*
	60	18.29	65.7	267' 11"	81.66	72.4*	32.8*	69.0*	31.3*	63.5*	28.8*	51.5*	23.4*
	65	19.81	62.9	265' 5"	80.90	70.8*	32.1*	68.3*	31.0*	62.2*	28.2*	50.4*	22.9*
	70	21.35	60.0	262' 7"	80.04	70.1*	31.8*	67.9*	30.8*	60.9*	27.6*	49.4*	22.4*
	75	22.83	57.0	259' 5"	79.07	68.3	31.0	67.5*	30.6*	59.0*	26.8*	48.4*	22.0*
	80	24.38	53.9	255' 11"	78.00	63.5	28.8	63.8	28.9	56.8*	25.8*	46.8*	21.2*
90	27.43	47.3	247' 5"	75.41	54.8	24.9	55.1	25.0	53.5*	24.3*	42.6*	19.3*	
100	30.48	39.9	236' 5"	72.05	48.1	21.8	48.3	21.9	48.4	22.0	40.2*	18.2*	
110	33.53	30.9	221' 5"	67.48	42.7	19.4	42.9	19.5	43.0	19.5	37.5*	17.0*	
120	36.58	18.4	196' 7"	59.92	38.3	17.4	38.5	17.5	38.6	17.5	34.3*	15.6*	
120' (36.58 m)	37	11.27	79.2	285' 9"	87.09	73.0*	33.1*	68.5*	31.1*	62.8*	28.5*	50.6*	23.0*
	40	12.19	77.6	285' 2"	86.93	72.3*	32.8*	68.0*	30.8*	62.2*	28.2*	50.4*	22.9*
	45	13.72	75.2	283' 11"	86.53	70.3*	31.9*	66.6*	30.2*	61.9*	28.1*	50.0*	22.7*
	50	15.24	72.8	282' 6"	86.11	68.8*	31.2*	65.2*	29.6*	60.8*	27.6*	49.5*	22.5*
	55	16.76	70.3	280' 10"	86.20	67.3*	30.5*	63.8*	28.9*	60.0*	27.2*	48.9*	22.2*
	60	18.29	67.8	278' 10"	84.98	66.5*	30.2*	63.1*	28.6*	58.7*	26.6*	47.9*	21.7*
	65	19.81	65.3	276' 7"	84.30	65.6*	29.8*	62.4*	28.3*	58.2*	26.4*	47.4*	21.5*
	70	21.34	62.7	274' 1"	83.55	65.0*	29.5*	61.8*	28.0*	57.2*	25.9*	46.4*	21.0*
	75	22.83	60.0	271' 4"	82.70	64.6*	29.3*	61.5*	27.9*	55.5*	25.2*	45.5*	20.6*
	80	24.38	57.3	268' 2"	81.75	63.0	28.6	61.2*	27.8*	53.9*	24.4*	42.4*	19.2*
90	27.43	51.1	260' 8"	79.46	54.4	24.7	54.6	24.8	50.2*	22.8*	40.2*	18.2*	
100	30.48	45.3	251' 6"	76.66	47.7	21.6	47.9	21.7	46.6*	21.1*	37.9*	17.2*	
110	33.53	38.2	239' 10"	73.09	42.3	19.2	42.4	19.2	40.5*	18.4*	35.4*	16.1*	
120	36.58	29.5	223' 11"	68.24	37.9	17.2	38.0	17.2	36.5*	16.6*	31.8*	14.4*	
130	39.62	17.5	197' 11"	60.32	34.2	15.5	34.4	15.6	32.9*	14.9*	28.7*	13.0*	
130' (39.62 m)	39	11.88	79.2	295' 7"	90.09	67.0*	30.4*	62.5*	28.4*	—	—	—	—
	40	12.19	78.6	295' 5"	90.04	66.7*	30.3*	62.2*	28.2*	57.2*	25.9*	46.4*	21.0*
	45	13.72	76.4	294' 4"	89.70	65.0*	29.5*	61.4*	27.9*	56.9*	25.8*	46.2*	20.9*
	50	15.24	74.1	292' 11"	89.28	63.4*	28.6*	59.9*	27.2*	55.9*	25.4*	46.0*	20.8*
	55	16.76	71.9	291' 5"	88.82	62.1*	28.2*	58.6*	26.6*	54.7*	24.8*	45.5*	20.6*
60	18.29	69.6	289' 7"	88.27	60.8*	27.6*	57.9*	26.3*	54.0*	24.5*	43.2*	19.6*	

① Capacities shown in thousands of pounds and kilograms.

② Measured vertically from center of boom head sheave to ground.

(continued)

LS-718 tower crane capacities — tower plus boom only

Refer to Notes page 5.

Boom					Based on 30 m.p.h. (48.27 km/hr.) wind speed									
Length	Radius		Angle	160' (48.77 m) lower boom [ⓐ] point height		Capacities [ⓐ] with side frames extended — 360° swing								
	Feet	meters				Tower heights								
					140' (42.67 m) to 160' (48.77 m)		170' (51.82 m) to 190' (57.91 m)		200' (60.96 m) to 220' (67.06 m)		230' (70.10 m) to 250' (76.20 m)			
						Lbs.	kgs	Lbs.	kgs	Lbs.	kgs	Lbs.	kgs	
130' (39.62 m)	65	19.81	67.3	287' 6"	87.62	60.1*	27 3*	57.2*	25 9*	53.3*	24 2*	42.8*	19 4*	
	70	21.34	64.9	285' 4"	86.96	59.4*	26 9*	56.5*	25 6*	52.6*	23 9*	42.3*	19 1*	
	75	22.83	62.5	282' 8"	86.15	58.9*	26 7*	56.0*	25 4*	52.0*	23 6*	41.1*	18 6*	
	80	24.38	60.0	279' 11"	85.31	58.6*	26 6*	55.7*	25 3*	50.7*	23 0*	40.0*	18 1*	
	90	27.43	54.9	273' 5"	83.33	54.0	24 5	55.4*	25 1*	47.3*	21 5*	37.7*	17 1*	
	100	30.48	49.4	265' 5"	80.89	47.2	21 4	47.4	21 5	43.1*	19 6*	35.6*	16 1*	
	110	33.53	43.2	255' 6"	77.88	41.9	19 0	42.0	19 1	38.2*	17 3*	33.2*	15 0*	
	120	36.58	36.6	243' 0"	74.07	37.5	17 0	37.6	17 1	34.2*	15 5*	29.7*	13 4*	
	130	39.62	29.3	226' 4"	68.98	33.8	15 3	33.9*	15 4*	30.3*	13 7*	26.6*	12 0*	
	140	42.67	16.8	199' 1"	60.69	31.1	14 1	30.6*	13 9*	27.4*	12 4*	24.0*	10 8*	
140' (42.67 m)	42	12.80	78.7	305' 2"	92.97	60.7*	27 5*	56.8*	25 7*	—	—	—	—	
	45	13.72	77.3	304' 7"	92.84	60.1*	27 2*	56.3*	25 5*	52.4*	23 7*	41.6*	18 8*	
	50	15.24	75.3	303' 4"	92.45	58.5*	26 5*	55.1*	24 9*	51.3*	23 2*	41.4*	18 7*	
	55	16.76	73.2	301' 11"	92.02	57.3*	25 9*	54.0*	24 4*	50.2*	22 7*	41.1*	18 6*	
	60	18.29	71.1	300' 2"	91.50	56.1*	25 4*	52.9*	23 9*	49.6*	22 4*	40.7*	18 4*	
	65	19.81	68.9	298' 4"	90.93	54.9*	24 9*	52.3*	23 7*	48.6*	22 0*	40.2*	18 2*	
	70	21.34	66.8	296' 4"	90.31	54.4*	24 6*	51.7*	23 4*	48.0*	21 7*	39.5*	17 9*	
	75	22.83	64.6	293' 11"	89.58	53.8*	24 4*	51.1*	23 1*	47.4*	21 5*	38.6*	17 5*	
	80	24.38	62.3	291' 5"	88.82	53.3*	24 1*	50.6*	22 9*	46.9*	21 2*	37.5*	17 0*	
	90	27.43	57.7	285' 6"	87.02	53.0*	24 0*	50.4*	22 8*	43.4*	19 6*	35.4*	16 0*	
	100	30.48	52.8	278' 5"	84.47	46.8	21 2	47.0	21 3*	40.5*	18 3*	33.0*	14 9*	
	110	33.53	47.5	269' 10"	82.24	41.4	18 7	41.1*	18 6*	35.9*	16 2*	31.1*	14 1*	
	120	36.58	41.8	259' 4"	79.03	37.0	16 7	36.2*	16 4*	31.8*	14 4*	27.6*	12 5*	
	130	39.62	35.1	246' 1"	75.01	34.5*	15 6*	31.9*	14 4*	28.2*	12 7*	24.5*	11 1*	
	140	42.67	27.2	228' 7"	69.68	30.4*	13 7*	28.1*	12 7*	25.0*	11 3*	21.8*	9 8*	
150	45.72	16.2	200' 4"	61.05	26.8*	12 1*	24.9*	11 2*	22.2*	10 0*	19.6*	8 8*		
150' (45.72 m)	46	14.02	77.9	314' 7"	95.88	55.0*	24 9*	51.5*	23 3*	—	—	—	—	
	50	15.24	76.3	313' 8"	95.62	53.8*	24 4*	50.5*	22 9*	47.3*	21 4*	38.5*	17 4*	
	55	16.76	74.3	312' 4"	95.19	52.5*	23 8*	49.5*	22 4*	46.2*	20 9*	38.3*	17 3*	
	60	18.29	72.4	310' 10"	94.73	51.4*	23 3*	48.5*	21 9*	45.3*	20 5*	38.0*	17 2*	
	65	19.81	70.4	309' 0"	94.18	50.3*	22 8*	47.9*	21 7*	43.0*	19 5*	37.6*	17 0*	
	70	21.34	68.4	307' 2"	93.63	49.8*	22 5*	46.9*	21 2*	42.1*	19 0*	37.0*	16 7*	
	75	22.83	66.3	305' 0"	92.96	49.2*	22 3*	46.5*	21 0*	41.8*	18 9*	36.1*	16 3*	
	80	24.38	64.3	302' 8"	92.26	48.6*	22 0*	46.1*	20 9*	41.4*	18 7*	34.8*	15 7*	
	90	27.43	60.0	297' 4"	90.62	48.0*	21 7*	45.6*	20 6*	40.6*	18 4*	32.9*	14 9*	
	100	30.48	55.6	290' 10"	88.64	46.4	21 0	43.8*	19 8	38.3*	17 3*	31.0*	14 0*	
	110	33.53	50.9	283' 2"	86.32	41.0	18 5	38.6*	17 5	33.8*	15 3*	29.0*	13 1*	
	120	36.58	45.8	273' 11"	83.48	36.6	16 6	33.9*	15 3	29.8*	13 5*	25.7*	11 6*	
160' (48.77 m)	49	14.93	77.6	324' 2"	98.76	49.7*	22 5*	46.2*	20 9*	—	—	—	—	
	50	15.24	77.1	323' 11"	98.72	49.5*	22 4*	46.0*	20 8*	41.7*	18 9*	35.9*	16 2*	
	55	16.76	75.3	322' 8"	98.36	48.3*	21 9*	45.1*	20 4*	40.9*	18 5*	35.8*	16 2*	
	60	18.29	73.5	321' 4"	97.93	47.1*	21 3*	42.6*	19 3*	40.1*	18 1*	35.1*	15 9*	
	65	19.81	71.6	319' 7"	97.41	43.9*	19 9*	41.7*	18 9*	39.3*	17 8*	34.8*	15 7*	
	70	21.34	70.0	317' 11"	96.90	43.4*	19 6*	41.3*	18 7*	38.9*	17 6*	34.4*	15 6*	
	75	22.83	67.9	315' 11"	96.29	42.9*	19 4*	40.8*	18 5*	38.1*	17 2*	33.5*	15 1*	
	80	24.38	65.9	313' 8"	95.62	42.0*	19 0*	40.3*	18 2*	37.8*	17 1*	32.3*	14 6*	
	90	27.43	62.0	308' 10"	94.12	41.7*	18 9*	39.8*	18 0*	37.1*	16 8*	30.5*	13 8*	
	100	30.48	58.0	302' 11"	92.32	41.4*	18 7*	39.6*	17 9*	35.8*	16 2*	28.8*	13 0*	
	110	33.53	53.7	295' 11"	90.19	40.4*	18 3*	36.2*	16 4*	31.6*	14 3*	27.2*	12 3*	
	120	36.58	49.2	287' 8"	87.69	34.9*	15 8*	31.5*	14 2*	27.8*	12 6*	23.7*	10 7*	
170' (51.82 m)	52	15.84	77.3	333' 8"	101.69	42.6*	19 3*	40.4*	18 3*	—	—	—	—	
	55	16.76	76.2	333' 0"	101.50	42.1*	19 0*	39.8*	18 0*	37.5*	17 0*	32.5*	14 7*	
	60	18.29	74.5	331' 8"	101.10	41.3*	18 7*	39.0*	17 6*	36.8*	16 6*	31.9*	14 4*	
	65	19.81	72.7	330' 2"	100.59	40.5*	18 3*	38.2*	17 3*	36.1*	16 3*	31.6*	14 3*	
	70	21.34	71.0	328' 6"	100.13	39.7*	18 0*	37.8*	17 1*	35.7*	16 1*	31.0*	14 0*	
	75	22.83	69.2	326' 7"	99.56	39.2*	17 7*	37.1*	16 8*	35.0*	15 8*	30.8*	13 9*	
	80	24.38	67.4	324' 8"	98.97	38.7*	17 5*	36.8*	16 6*	34.3*	15 5*	30.0*	13 6*	
	90	27.43	63.7	320' 0"	97.54	37.8*	17 1*	36.1*	16 3*	33.6*	15 2*	28.3*	12 8*	
	100	30.48	60.0	314' 7"	95.89	37.5*	17 0*	35.8*	16 2*	33.3*	15 1*	26.7*	12 1*	
	110	33.53	56.0	308' 2"	93.94	37.4*	16 9*	34.0*	15 4*	29.5*	13 3*	25.0*	11 3*	
	120	36.58	51.9	300' 10"	91.68	32.6*	14 7*	29.4*	13 3*	25.7*	11 6*	22.0*	9 9*	

ⓐ Capacities shown in thousands of pounds and kilograms.
 ⓑ Measured vertically from center of boom head sheave to ground.

(continued)

LS-718 tower crane capacities — tower plus boom only

Refer to Notes page 5.

Boom						Based on 30 m.p.h. (48.27 km/hr.) wind speed							
Length	Radius		Angle	160' (48.77 m) tower boom [Ⓢ] point height		Capacities [Ⓢ] with side frames extended — 360° swing							
	Feet	meters		Feet	meters	Tower heights							
					140' (42.67 m) to 160' (48.77 m)	170' (51.82 m) to 190' (57.91 m)	200' (60.96 m) to 220' (67.06 m)	230' (70.10 m) to 250' (76.20 m)					
				Lbs.	kgs	Lbs.	kgs	Lbs.	kgs	Lbs.	kgs	Lbs.	kgs
170' (51.82 m)	130	39.62	47.5	292' 1"	89.03	27.8*	12.6*	25.2*	11.4*	22.2*	10.0*	18.9*	8.5*
	140	42.67	42.8	281' 11"	85.92	23.4*	10.6*	21.6*	9.7*	19.0*	8.6*	16.2*	7.3*
	150	45.72	37.6	269' 8"	82.20	19.7*	8.9*	18.4*	8.3*	16.2*	7.3*	13.9*	6.3*
	160	48.77	31.7	254' 10"	77.66	16.6*	7.5*	15.5*	7.0*	13.7*	6.2*	11.7*	5.3*
	170	51.82	24.5	235' 1"	71.66	13.7*	6.2*	13.0*	5.8*	11.5*	5.2*	9.9*	4.4*
	180	54.86	14.5	203' 7"	62.06	11.9*	5.3*	11.1*	5.0*	9.7*	4.3*	8.3*	3.7*
180' (54.86 m)	55	16.76	76.9	343' 4"	104.64	38.5*	17.4*	36.3*	16.4*	—	—	—	—
	57	17.37	76.5	342' 9"	104.47	38.1*	17.2*	36.0*	16.3*	33.9*	15.3*	29.2*	13.2*
	60	18.29	75.3	342' 1"	104.27	37.7*	17.1*	35.6*	16.1*	33.6*	15.2*	28.9*	13.1*
	65	19.81	73.7	340' 7"	103.81	37.0*	16.7*	34.9*	15.8*	32.8*	14.8*	28.6*	12.9*
	70	21.34	72.0	339' 1"	103.36	36.3*	16.4*	34.2*	15.5*	32.2*	14.6*	28.1*	12.7*
	75	22.83	70.3	337' 4"	102.81	35.6*	16.1*	33.9*	15.3*	31.8*	14.4*	27.8*	12.6*
	80	24.38	68.7	335' 6"	102.26	35.3*	16.0*	33.5*	15.1*	31.2*	14.1*	27.5*	12.4*
	90	27.43	65.3	331' 2"	100.95	34.5*	15.6*	32.6*	14.7*	30.5*	13.8*	26.0*	11.7*
	100	30.48	61.7	326' 1"	99.40	33.8*	15.3*	32.3*	14.6*	29.9*	13.6*	24.5*	11.1*
	110	33.53	58.1	320' 2"	97.60	33.7*	15.2*	31.7*	14.3*	27.3*	12.3*	22.9*	10.3*
	120	36.58	54.3	313' 5"	95.52	30.2*	13.6*	27.1*	12.2*	23.7*	10.7*	20.0*	9.0*
	130	39.62	50.4	305' 6"	93.12	25.4*	11.5*	23.2*	10.5*	20.2*	9.1*	17.2*	7.8*
	140	42.67	46.1	296' 5"	90.34	21.4*	9.7*	19.5*	8.8*	17.2*	7.8*	14.5*	6.5*
	150	45.72	41.5	285' 8"	87.08	17.7*	8.0*	16.3*	7.3*	14.4*	6.5*	12.2*	5.5*
160	48.77	36.4	273' 0"	83.21	14.5*	6.5*	13.5*	6.1*	11.9*	5.3*	10.0*	4.5*	
170	51.82	30.7	257' 6"	78.49	11.9*	5.3*	11.0*	4.9*	9.6*	4.3*	8.1*	3.6*	
180	54.86	23.7	237' 1"	72.27	9.4*	4.2*	8.9*	4.0*	7.8*	3.5*	6.5*	2.9*	
190	57.91	13.9	204' 7"	62.36	7.7*	3.4*	7.2*	3.2*	6.2*	2.8*	5.1*	2.3*	
190' (57.91 m)	57	17.37	77.0	353' 1"	102.62	34.9*	15.8*	—	—	—	—	—	—
	60	18.29	76.1	352' 5"	107.41	34.6*	14.6*	32.5*	14.7*	30.4*	13.7*	26.0*	11.7*
	65	19.81	74.5	351' 0"	106.98	33.8*	15.3*	31.8*	14.4*	29.8*	13.5*	25.7*	11.6*
	70	21.34	73.0	349' 7"	106.56	33.2*	15.0*	31.2*	14.1*	29.2*	13.2*	25.2*	11.4*
	75	22.83	71.4	347' 11"	106.04	32.6*	14.7*	30.6*	13.8*	28.9*	13.1*	25.0*	11.3*
	80	24.38	69.8	346' 2"	105.52	32.0*	14.5*	30.3*	13.7*	28.4*	12.8*	24.6*	11.1*
	90	27.43	66.6	342' 1"	104.27	31.2*	14.1*	29.6*	13.4*	27.7*	12.5*	23.8*	10.7*
	100	30.48	63.3	337' 5"	102.84	30.6*	13.8*	29.1*	13.1*	27.0*	12.2*	22.3*	10.1*
	110	33.53	60.0	331' 11"	101.16	30.3*	13.7*	28.8*	13.0*	25.2*	11.4*	21.0*	9.5*
	120	36.58	56.5	325' 7"	99.24	27.8*	12.6*	25.1*	11.3*	21.6*	9.7*	18.3*	8.3*
	130	39.62	52.8	318' 5"	97.05	23.2*	10.5*	21.1*	9.5*	18.4*	8.3*	15.4*	6.9*
	140	42.67	48.9	310' 1"	94.52	19.1*	8.6*	17.6*	7.9*	15.2*	6.8*	12.9*	5.8*
	150	45.72	44.8	300' 6"	91.59	15.5*	7.0*	14.4*	6.5*	12.5*	5.6*	10.5*	4.7*
	160	48.77	40.3	289' 5"	88.21	12.3*	5.5*	11.6*	5.2*	10.1*	4.5*	8.4*	3.8*
170	51.82	35.4	276' 2"	84.19	9.6*	4.3*	9.1*	4.1*	7.9*	3.5*	6.5*	2.9*	
180	54.86	29.8	260' 1"	79.28	7.3*	3.3*	6.9*	3.1*	5.9*	2.6*	4.8*	2.1*	
190	57.91	23.1	239' 1"	72.88	5.3*	2.4*	5.1*	2.3*	4.3*	1.9*	3.3*	1.4*	
200	60.96	13.5	205' 8"	62.70	3.9*	1.7*	3.7*	1.6*	3.0*	1.3*	2.1*	0.9*	
200' (60.96 m)	61	18.59	76.5	362' 5"	110.46	31.0*	14.0*	—	—	—	—	—	—
	62	18.89	76.3	362' 2"	110.34	30.9*	14.0*	29.0*	13.1*	—	—	—	—
	65	19.81	75.3	361' 5"	110.15	30.6*	13.8*	28.7*	13.0*	26.9*	12.2*	22.9*	10.3*
	70	21.34	73.8	360' 0"	109.73	30.0*	13.6*	28.2*	12.7*	26.4*	11.9*	22.5*	10.2*
	75	22.83	72.4	358' 5"	109.24	29.4*	13.3*	27.7*	12.5*	25.9*	11.7*	22.3*	10.1*
	80	24.38	70.9	356' 10"	108.75	28.9*	13.1*	27.2*	12.3*	25.4*	11.5*	21.9*	9.9*
	90	27.43	67.8	352' 11"	107.56	28.1*	12.7*	26.5*	12.0*	24.8*	11.2*	21.4*	9.7*
	100	30.48	64.7	348' 7"	106.25	27.5*	12.4*	26.0*	11.7*	24.2*	10.9*	20.3*	9.2*
	110	33.53	61.6	343' 5"	104.67	27.0*	12.2*	25.7*	11.6*	23.3*	10.5*	19.0*	8.6*
	120	36.58	58.3	337' 5"	102.84	25.6*	11.6*	22.8*	10.3*	19.8*	8.9*	16.5*	7.4*
	130	39.62	54.9	330' 10"	100.83	21.1*	9.5*	19.1*	8.6*	16.4*	7.4*	13.6*	6.1*
	140	42.67	51.4	323' 2"	98.51	17.1*	7.7*	15.7*	7.1*	13.5*	6.1*	11.2*	5.0*
	150	45.72	47.6	314' 6"	95.86	13.5*	6.1*	12.5*	5.6*	10.8*	4.8*	8.8*	3.9*
	160	48.77	43.6	304' 6"	92.81	10.4*	4.7*	9.7*	4.3*	8.3*	3.7*	6.7*	3.0*
170	51.82	39.2	292' 11"	89.28	7.6*	3.4*	7.2*	3.2*	6.1*	2.7*	4.8*	2.1*	
180	54.86	34.4	279' 4"	85.13	5.2*	2.3*	5.1*	2.3*	4.2*	1.9*	3.1*	1.4*	
190	57.91	29.0	262' 7"	80.04	3.2*	1.4*	3.2*	1.4*	2.5*	1.1*	1.6*	0.7*	
200	60.96	22.4	241' 0"	73.46	1.5*	0.6*	1.7*	0.7*	1.0*	0.4*	—	—	

Ⓢ Capacities shown in thousands of pounds and kilograms.
 Ⓢ Measured vertically from center of boom head sheave to ground.



LS-718 tower boom/jib working ranges

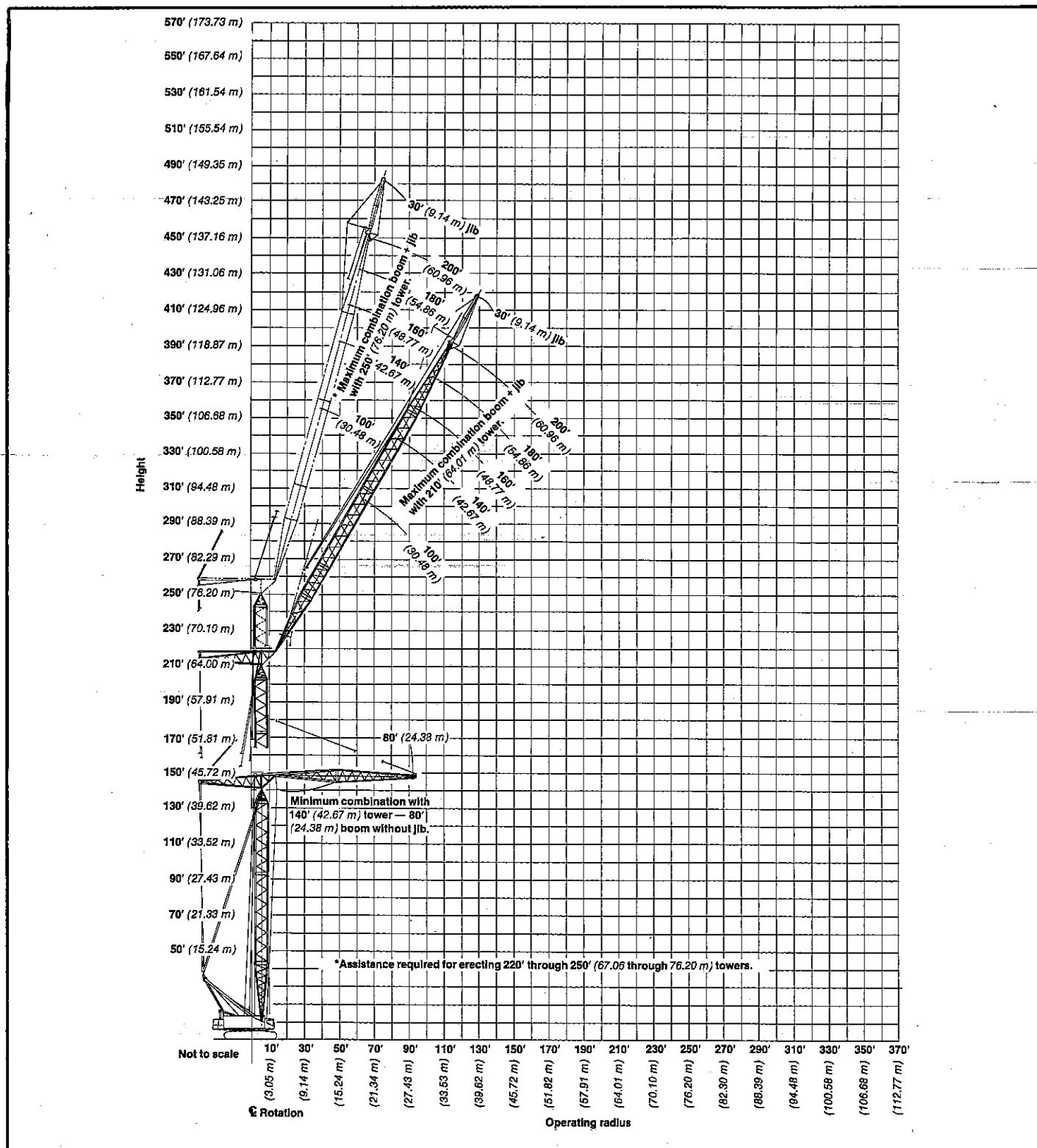
Tower — tubular; 100" (2.54 m) wide, 85" (2.16 m) deep, with retractable gantry, tower live mast, dual 1½" (28 mm) diameter tower pendants and dual 1½" (28 mm) diameter balance arm pendants.

Crawler — 17' 6" (5.33 m) extended gauge, 29' 11" (9.12 m) overall length.

Counterweight — 134,500# (61 009 kg) "AB" only.

Jib — tubular; 36" (0.91 m) wide, 30" (0.76 m) deep. Mounted in-line only.

Boom — tubular; 100" (2.54 m) wide, 85" (2.16 m) deep, with open throat top section, boom live mast dual 1½" (28 m) diameter pendants.





LS-718 tower crane capacities — tower plus boom only

Refer to Notes below.

Notes — boom lifting capacities

- Capacities included in this chart are the maximum allowable, and are based on machine standing level on firm supporting surface under ideal job conditions.
- Capacities do not exceed 75% of a static load required to tip the machine. An asterisk (*) indicates capacities are based on factors other than stability.
- Capacities are based on freely suspended loads and make no allowance for such factors as the effect of wind, sudden stopping of loads, supporting surface conditions, and operating speeds. Operator must reduce load ratings to take such conditions into account. Deduction from rated capacities must be made for weight of jib, hook block, weighted ball/hook, sling, spreader bar, or other suspended gear.
- Refer to operator's manual for instructions pertaining to raising or lowering of attachment.
- Retractable gantry in raised position, and 40' (12.19 m) tower live mast in operating position, must be used for all capacities on this chart.
- Boom point height dimensions based on 160' (48.77 m) tower height. As tower sections are added or removed, length of sections must be added to, or subtracted from, the boom point height dimensions on this chart to determine revised dimensions.
- For lifting maximum rated load — 100,000# (45 360 kg) — with 1 1/4" (32 mm) diameter wire rope 3 parts of type "N" wire are required. Check parts of line required for all capacities.
- All capacities rated for 360° swing.
- Least stable rated condition is over the side.
- Tower must be positioned 90° to horizontal for all capacities shown on this chart.
- Tower lengths from 230' (70.10 m) through 250' (76.20 m) require outside assistance for erection or lowering.
- Boom lengths 170' (51.82 m) through 200' (60.92 m) require outside assistance for erection or lowering — when mounted on tower heights from 220' (66.06 m) through 250' (76.20 m).
- Attachment must be erected and lowered over the ends of the crawler mounting. Adequate blocking must be placed under track drive and idler sprockets to prevent machine's rocking.
- These capacities apply only to the machine as originally manufactured and normally equipped by FMC Corporation Construction Equipment Group.

LS-718 tower crane capacities — tower plus boom plus jib

Refer to Notes page 6.

Tower — tubular; 100" (2.54 m) wide, 85" (2.16 m) deep, with retractable gantry, tower live mast, dual 1 1/2" (28 mm) diameter tower pendants and dual 1 1/2" (28 mm) diameter balance arm pendants.

Boom — tubular; 100" (2.54 m) wide, 85" (2.16 m) deep, with open throat top section, boom live mast dual 1 1/2" (28 mm) diameter pendants.

Counterweight — 134,500# (61 009 kg) "AB" only.

Jib — tubular; 36" (0.91 m) wide, 30" (0.76 m) deep. Mounted in-line only.

Mounting — crawler; 17' 6" (5.33 m) extended gauge, 29' 11" (9.12 m) overall length.

NOTE: The following chart only includes representative capacities of a 30' (9.14 m) jib mounted in-line with boom. Should additional jib capacity information be required, please consult Sales Office.

Based on 30 m.p.h. (48.27 km/hr.) wind speed							
Jib capacities ^① with side frames extended — 360° swing							
Boom length	Jib load radius		Jib point height ^② -200' tower		Boom angle	Jib capacities	
	Feet	meters	Feet	meters		Deg.	Lbs.
100' (30.48 m)	40	12.19	337' 7"	102.89	78.5	30.0	13.6
	50	15.24	335' 1"	102.13	74.0	30.0	13.6
	60	18.29	331' 10"	101.13	69.5	30.0	13.6
	70	21.34	327' 8"	99.86	64.8	30.0	13.6
	80	24.38	322' 4"	98.24	59.9	29.4	13.3
	90	27.43	316' 0"	96.31	54.7	25.8	11.7
	100	30.48	308' 2"	93.92	49.2	23.0	10.4
	110	33.53	298' 7"	91.01	43.2	20.8	9.4
	120	36.58	286' 8"	87.37	36.4	19.1	8.7
	130	39.62	270' 10"	82.54	28.2	17.7	8.0
140	42.67	247' 1"	75.31	16.9	16.7	7.6	
120' (36.58 m)	50	15.24	355' 9"	108.43	76.2	30.0	13.6
	60	18.29	353' 0"	107.59	72.3	30.0	13.6
	70	21.34	349' 4"	106.47	68.3	30.0	13.6
	80	24.38	345' 0"	105.15	64.1	30.0	13.6
	90	27.43	339' 8"	103.52	59.9	29.3	13.3
	100	30.48	333' 4"	101.59	55.4	26.2	11.0
	110	33.53	325' 10"	99.31	50.7	23.7	10.8
	120	36.58	317' 0"	96.62	45.6	21.6	9.8
	130	39.62	306' 2"	93.31	40.1	19.9	9.0

Based on 30 m.p.h. (48.27 km/hr.) wind speed							
Jib capacities ^① with side frames extended — 360° swing							
Boom length	Jib load radius		Jib point height ^② -200' tower		Boom angle	Jib capacities	
	Feet	meters	Feet	meters		Deg.	Lbs.
120' (36.58 m)	140	42.67	293' 0"	89.30	33.8	18.6	8.4
	150	45.72	275' 9"	84.05	26.3	17.4	7.9
	160	48.77	250' 1"	76.23	15.8	16.0	7.3
140' (42.67 m)	50	15.24	376' 4"	114.70	77.8	30.0	13.6
	60	18.29	373' 10"	113.94	74.4	30.0	13.6
	70	21.34	370' 9"	113.00	70.9	30.0	13.6
	80	24.38	367' 0"	111.86	67.3	30.0	13.6
	90	27.43	362' 4"	110.43	63.7	29.4	13.3
	100	30.48	357' 0"	108.81	59.9	26.6	12.1
	110	33.53	350' 9"	106.91	56.0	23.7	10.8
	120	36.58	343' 6"	104.69	51.8	21.2	9.6
	130	39.62	335' 0"	102.10	47.5	18.9	8.6
	140	42.67	325' 1"	99.09	42.8	16.2	7.3
150	45.72	313' 3"	95.48	37.6	13.9	6.3	
160	48.77	298' 10"	91.08	31.7	11.7	5.3	
170	51.82	280' 3"	85.42	24.7	9.9	4.5	
180	54.87	252' 9"	77.03	14.8	8.3	3.8	

(continued)

① Capacities shown in thousands of pounds and kilograms.

② Measured vertically from center of jib peak sheave to ground.

LS-718 tower crane capacities — tower plus boom plus jib

Refer to Notes below.

Based on 30 m.p.h. (48.27 km/hr.) wind speed								
Jib capacities ^① with side frames extended — 360° swing								
Boom length	Jib load radius		Jib point height ^② -200' (60.96 m) tower		Boom angle Deg.	Jib capacities		
	Feet	meters	Feet	meters		Lbs.	kgs	
160' (48.77 m)	50	15.24	396'	9"	120.93	79.1	26.0	11.8
	60	18.29	394'	7"	120.27	76.0	26.0	11.8
	70	21.34	391'	9"	119.40	73.0	25.2	11.4
	80	24.38	388'	4"	118.36	69.8	24.6	11.2
	90	27.43	384'	4"	117.14	66.6	23.8	10.8
	100	30.48	379'	9"	115.74	63.3	22.3	10.1
	110	33.53	374'	4"	114.09	59.9	21.0	9.5
	120	36.58	368'	2"	112.21	56.4	18.3	8.3
	130	39.62	361'	1"	110.06	52.7	15.4	7.0
	140	42.67	352'	10"	107.53	48.9	12.9	5.9
	150	45.72	343'	7"	104.72	44.8	10.5	4.8
	160	48.77	332'	8"	101.39	40.4	8.4	3.8
	170	51.82	319'	10"	97.48	35.5	6.5	2.9
	180	54.87	304'	4"	92.75	30.0	4.8	2.2
190	57.91	284'	7"	86.74	23.3	3.3	1.5	
200	60.96	255'	3"	77.80	14.0	2.1	1.0	
180' (54.86 m)	60	18.29	415'	1"	125.52	77.4	20.0	9.1
	70	21.34	412'	7"	125.97	74.6	20.0	9.1
	80	24.38	409'	7"	124.84	71.8	19.4	8.8
	90	27.43	406'	0"	123.74	68.9	18.9	8.6
	100	30.48	401'	10"	122.47	66.0	18.2	8.3
	110	33.53	397'	1"	121.03	63.0	17.1	7.8
	120	36.58	391'	8"	119.37	59.9	14.7	6.7
	130	39.62	385'	5"	117.47	56.7	12.1	5.5
	140	42.67	378'	7"	115.39	53.4	9.5	4.3
	150	45.72	370'	8"	112.97	50.0	7.2	3.3
160	48.77	361'	8"	110.23	46.4	5.1	2.3	
170	51.82	351'	7"	107.16	42.5	3.2	1.5	
180	54.87	339'	9"	103.55	38.3	1.5	0.7	

Based on 30 m.p.h. (48.27 km/hr.) wind speed								
Jib capacities ^① with side frames extended — 360° swing								
Boom length	Jib load radius		Jib point height ^② -200' (60.96 m) tower		Boom angle Deg.	Jib capacities		
	Feet	meters	Feet	meters		Lbs.	kgs	
200' (60.96 m)	65	19.81	434'	6"	132.43	77.2	14.8	6.7
	70	21.34	433'	3"	132.05	76.0	14.8	6.7
	80	24.38	430'	7"	131.24	73.4	14.5	6.6
	90	27.43	427'	3"	130.22	70.8	14.1	6.4
	100	30.48	423'	3"	129.01	68.2	13.7	6.2
	110	33.53	419'	3"	127.79	65.5	13.3	6.0
	120	36.58	414'	6"	126.33	62.7	11.4	5.2
	130	39.62	409'	0"	124.66	59.9	8.7	3.9
	140	42.67	402'	10"	122.77	57.0	6.2	2.8
	150	45.72	396'	0"	120.70	54.0	4.0	1.8
	160	48.77	388'	3"	118.34	50.9	2.0	0.9

① Capacities shown in thousands of pounds and kilograms.
 ② Measured vertically from center of jib peak sheave to ground.

Notes — jib lifting capacities

- Capacities included in this chart are the maximum allowable, and are based on machine standing level on firm supporting surface under ideal job conditions.
- Capacities do not exceed 75% of a static load required to tip the machine, and all capacities are based on factors other than stability.
- Capacities are based on freely suspended loads and make no allowance for such factors as the effect of wind, sudden stopping of loads, supporting surface conditions, and operating speeds. Operator must reduce load ratings to take such conditions into account. Deduction from rated capacities must be made for weight of hook block, weighted ball/hook, sling, spreader bar, or other suspended gear.
- Refer to operator's manual for instructions pertaining to raising or lowering of attachment.
- Retractable gantry in raised position, and 40' (12.19 m) tower live mast in operating position, must be used for all capacities on this chart.
- Jib point height dimensions based on 200' (60.96 m) tower height. As tower sections are added or removed, length of sections must be added to, or subtracted from, the jib point height dimensions on this chart to determine revised dimensions.
- For lifting maximum rated load — 30,000 lbs. (13,608 kg) — with 1" (26 mm) diameter wire rope, 2 parts of type "N" wire are required. Check parts of line required for all capacities.
- All capacities are for all tower heights and rated for 360° swing.
- Least stable rated condition is over the side.
- Capacities are for jib mounted in-line only. For capacities with jib offset 15° and 30°, consult Sales Office.
- Tower must be positioned 90° to horizontal for all capacities shown on this chart.
- Attachment must be erected and lowered over the ends of the crawler mounting. Adequate blocking must be placed under track drive and idler sprockets to prevent machine's rocking.
- These capacities apply only to the machine as originally manufactured and normally equipped by FMC Corporation, Construction Equipment Group.

We are constantly improving our products and therefore reserve the right to change designs and specifications.



FMC Corporation Construction Equipment Group Bannockburn Illinois 60015

Link-Belt construction equipment manufactured in: Cedar Rapids Iowa • Lexington & Bowling Green Kentucky • Ontario Canada • Milan Italy • Queretaro Mexico & Nagoya Japan (under license)